

Dario Kang G

PAVIMENTOS  
FLOOR TILES  
& PAVERS



A  
CIMENTEIRA  
DO  
LOURO

# HUMANIZAMOS O MUNDO COM PRODUTOS EM BETÃO

## WE HUMANIZE THE WORLD WITH CONCRETE PRODUCTS

Somos uma marca portuguesa com DNA forte e dinâmico na área dos pavimentos e revestimentos em betão. Temos uma forte ligação ao saber técnico, design inovador, qualidade, performance e resistência dos nossos materiais e soluções. Estamos há **mais de 45 anos** no mercado com projectos de arquitetura e design de interiores de referência em todo mundo. Em Portugal somos responsáveis pelas mais importantes infra-estruturas rodoviárias e pelos pavimentos e revestimentos de algumas das maiores obras públicas, comerciais, educativas e desportivas. Evoluímos com o compromisso na inovação, no design, na qualidade, no ambiente e na segurança das nossas soluções, produtos e matérias-primas. Da génese e recolha da matéria-prima ao processamento final do produto, acompanhamos todas as etapas até chegarmos às peças que comercializamos. Graças às excelentes propriedades técnicas e visuais, os pavimentos e revestimentos para Exteriores e Interiores da ACL são hoje utilizados em todos os tipos de projectos arquitectónicos internacionais.

We are a Portuguese brand with strong and dynamic DNA in area of concrete floors and coverings. We have one strong connection to technical knowledge, innovative design, quality, performance and strength of our materials and solutions. We have been in the market **for over 45 years** with reference architecture projects and interior design worldwide. In Portugal we are responsible for the most important road infrastructures, floors and wall tiles of some of the largest public, commercial, educational and sports reference jobs. We have evolved with our commitment with innovation, design, quality, environment and safety of our solutions, products and raw materials. From genesis and collection of raw material to the final process, we follow all the steps until we reach the product that we trade. Thanks to the excellent technical and visual properties, ACL's indoor and outdoor flooring and coverings are now used in all types of international architectural projects.

# INDEX

6	MARMOCIM® CLASSIC	25	ROMANO
8	MARMOCIM® REVOLUTION	26	PORTUCALE
14	MARMOBRICK CLASSIC	28	TRIANON
15	MARMOBRICK REVOLUTION	29	PAVÊ RÚSTICO
16	INCONCRETE	30	PEDRA TOSCA
18	BETÃO APARENTE	31	MADEIRA TOSCA
20	TRAVERTINO	32	MADEIRA BETÃO
21	ARDÓSIA	34	GODO E PEDRA LAVADA
22	GRANITO	36	RELEVO NORMAL
23	STRUKTURIT	37	RELEVO POLIDO
24	ARDOS	38	LISO POLIDO
		39	PAVIMENTOS INCLUSIVOS
40	IMPERMEABILIZANTE WATERPROOFING		
40	INDICAÇÕES GERAIS GENERAL INFORMATION		



Índice de absorção de água  
Water absorption index

Estes produtos são fabricados a partir de granulados de pedras naturais que podem, como a própria pedra, APRESENTAR LIGEIRAS VARIAÇÕES DE TONALIDADES E NUANCES DE CORES em função do seu aprovisionamento.

These tiles are made from natural granulated stones and therefore VARIATIONS IN TONE AND COLOUR SHADES MAY OCCUR, as stone is a natural material.

# MARMOCIM<sup>®</sup> CLASSIC

No decorrer dos séculos, os produtos como o Marmocim ganharam a reputação de uma das criações artesanais mais originais da indústria de pavimentos, trazendo prestígio para espaços arquitectónicos com beleza extraordinária em todo o mundo.

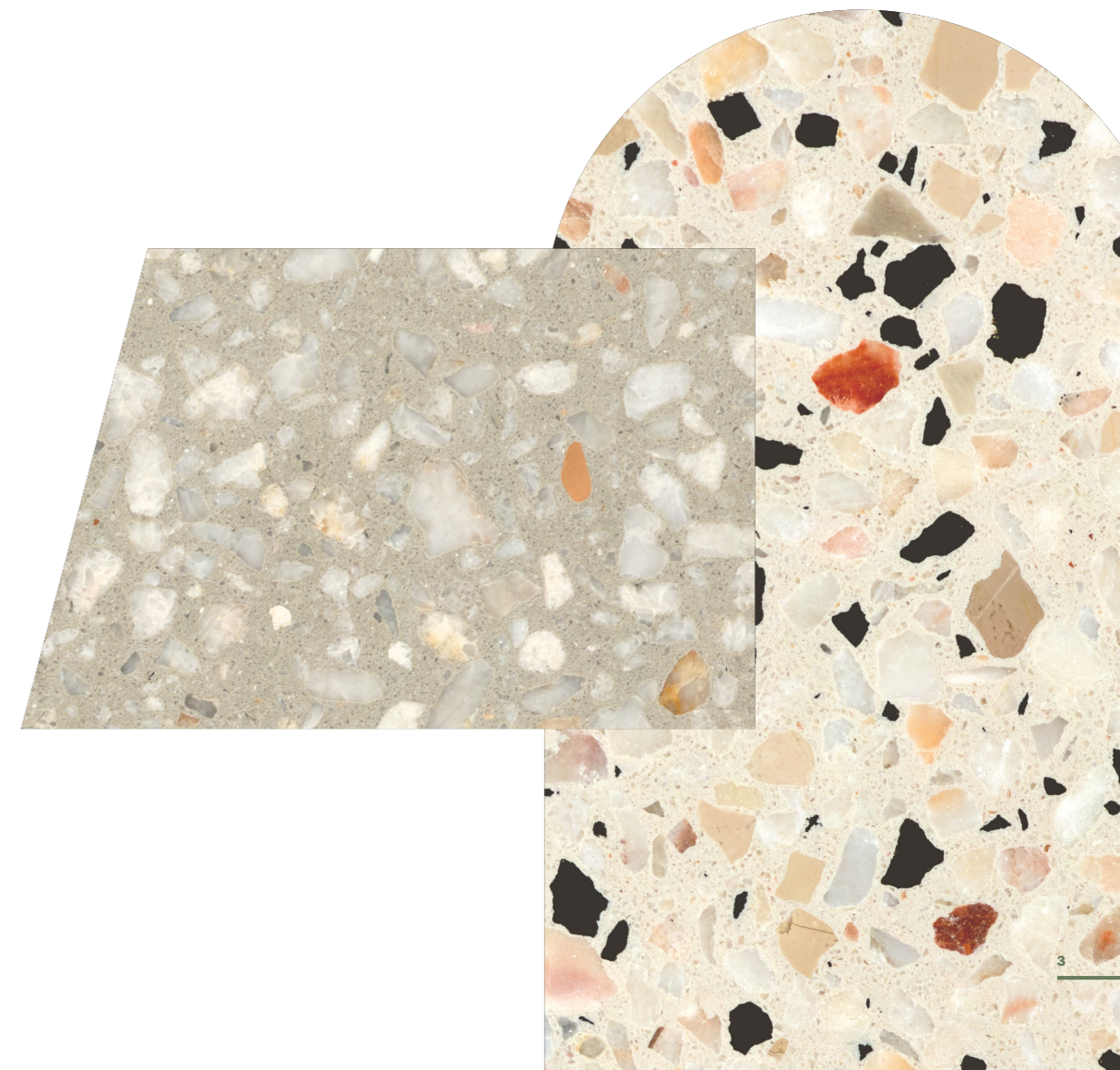
Over the centuries, products like Marmocim have earned a reputation as one of the most original handcrafted creations in the flooring industry, bringing prestige to architectural spaces with extraordinary beauty around the world.



# MARMOCIM<sup>®</sup> REVOLUTION

Marmocim Revolution é uma coleção que garante um design eclético e versátil, canalizando as tendências de estilo mais recentes, tanto para projetos de renovação como para projetos novos.

Marmocim Revolution is a collection that guarantees an eclectic and versatile design, channeling the latest style trends, both for renovation projects and for new projects.



# ACABAMENTOS

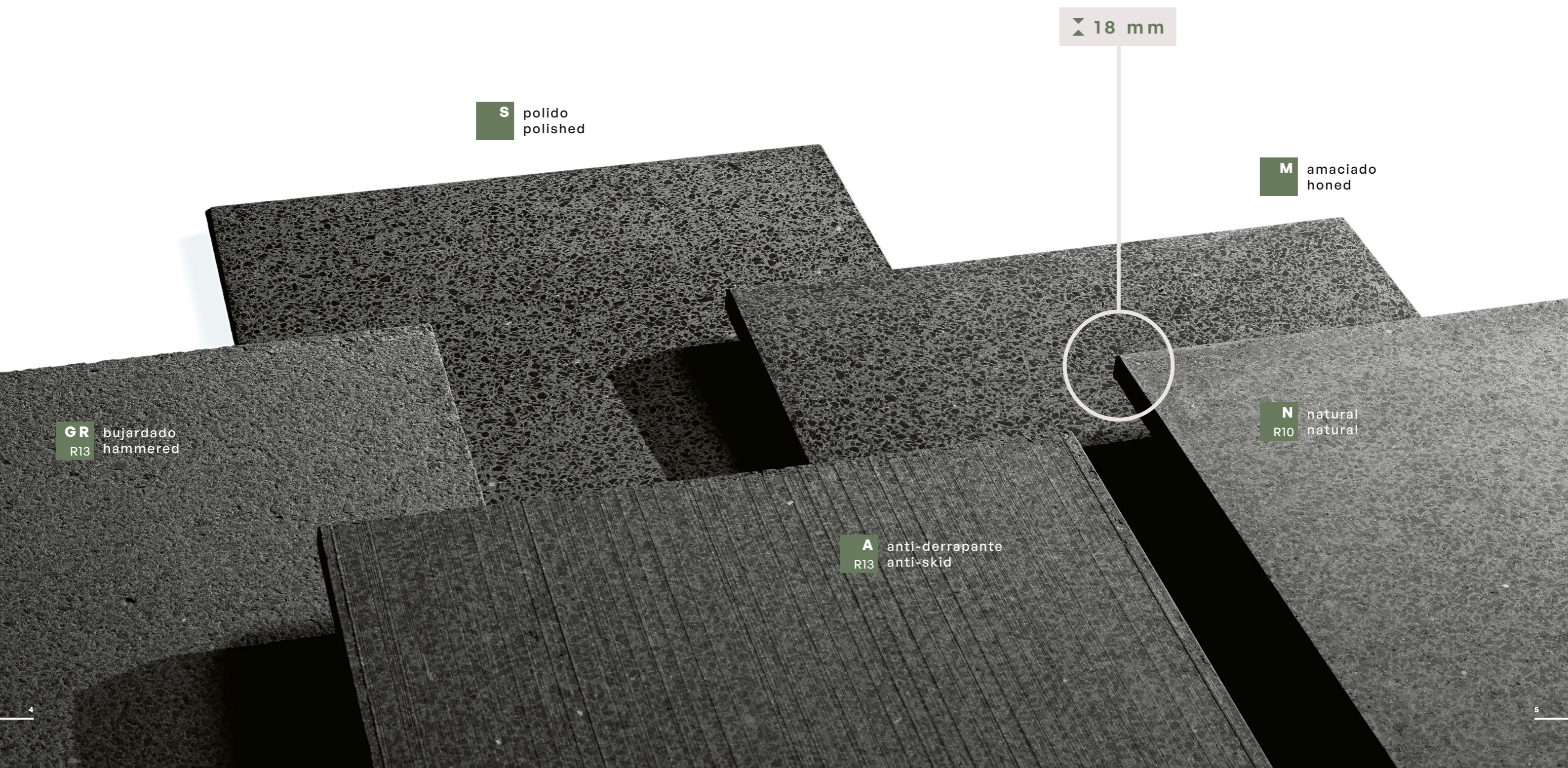
FINISHES



dimensões dimensions	peça kg piece kg	paleta pallet
410 x 410 x 18mm 200 x 200 x 18 mm *	7,3 // 1,75 Kg	30 m <sup>2</sup>   1300 Kg
**410 x 70 x 18mm	-	-

\*200 x 200 x 18 mm aresta viva  
\*200 x 200 x 18 mm sharp edge

\*\*rodapé  
\*\*skirting



**S** polido  
polished

**M** amaciado  
honed

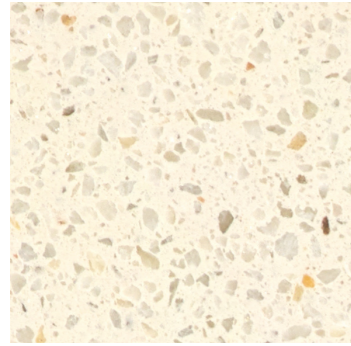
**GR** bujardado  
R13 hammered

**N** natural  
R10 natural

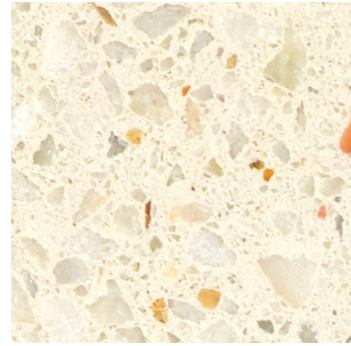
**A** anti-derrapante  
R13 anti-skid

18 mm

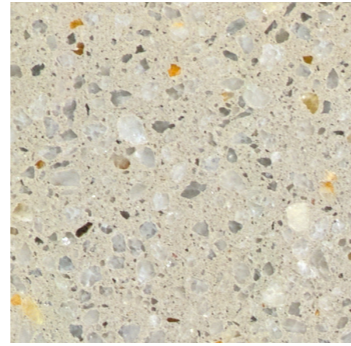
# MARMOCIM<sup>®</sup> CLASSIC



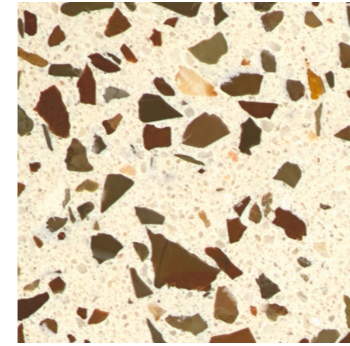
cream 408



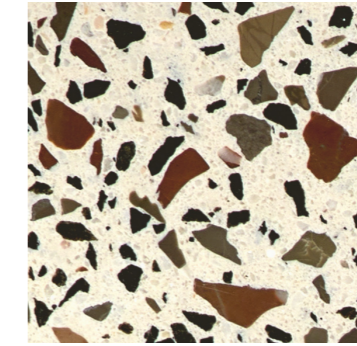
beige 425



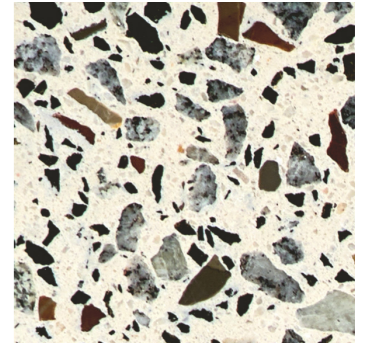
grey 403



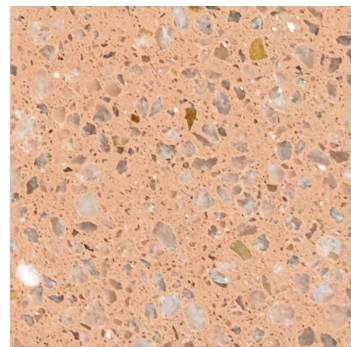
desert 434



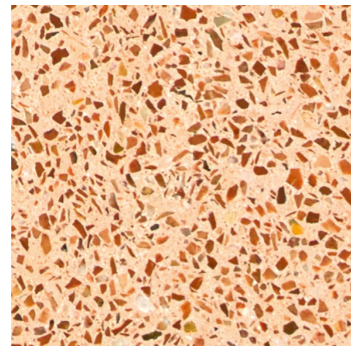
spice 430



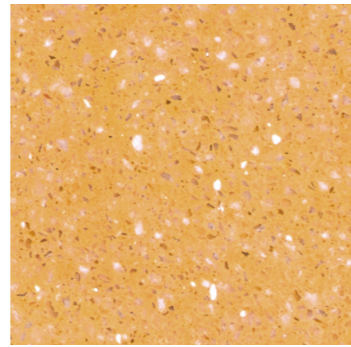
snack 436



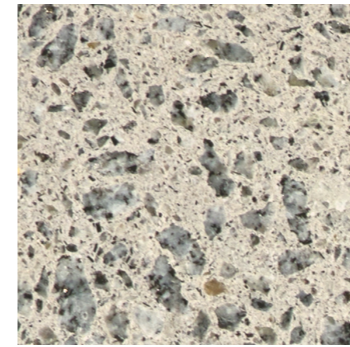
brick 428



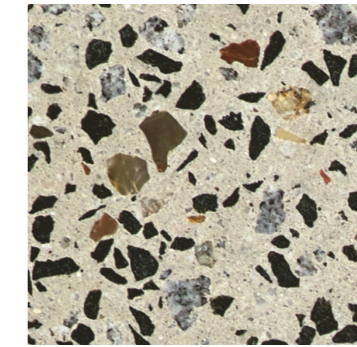
lava 401



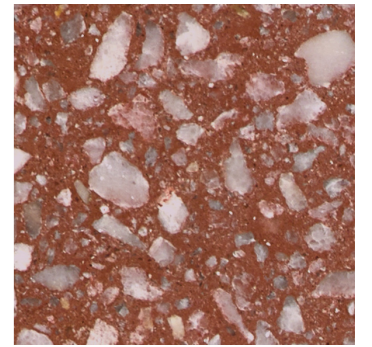
yellow 410



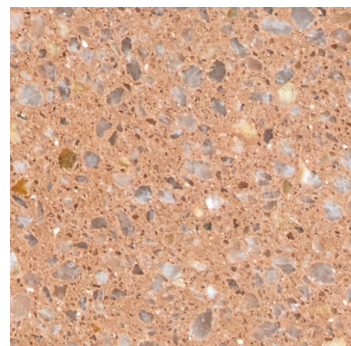
rock 417



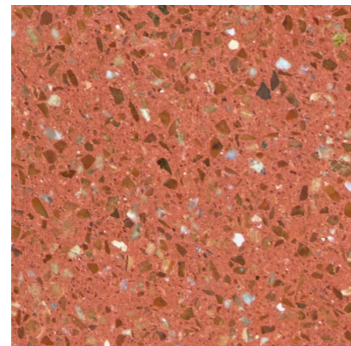
precious 432



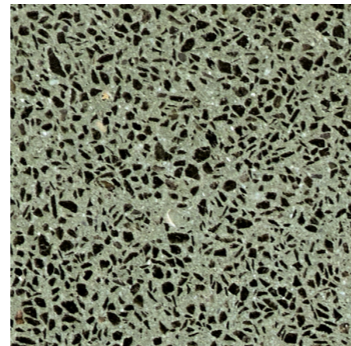
gem 424



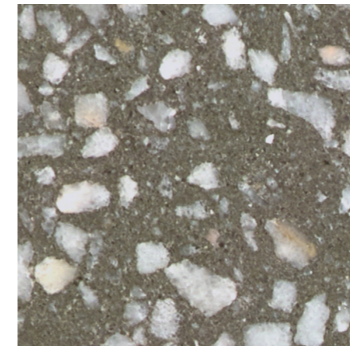
hill 429



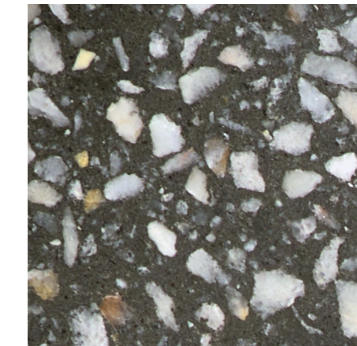
red 411



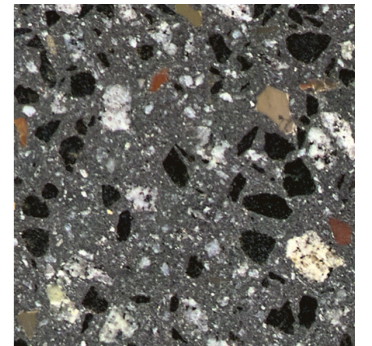
grass 422



cave 423



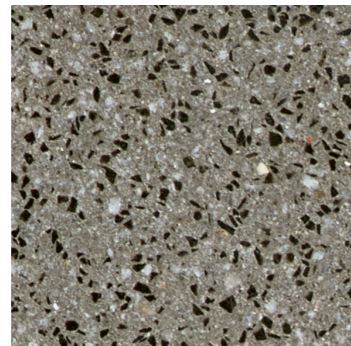
salt 426



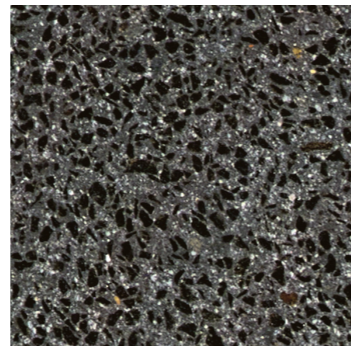
chic 433



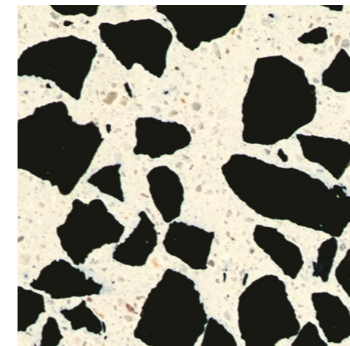
earth 415



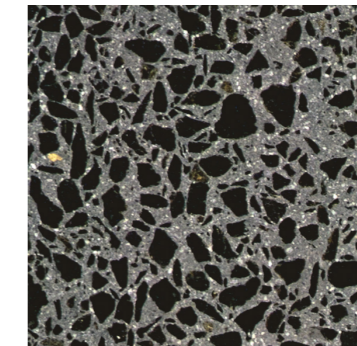
volcanic 413



black 405

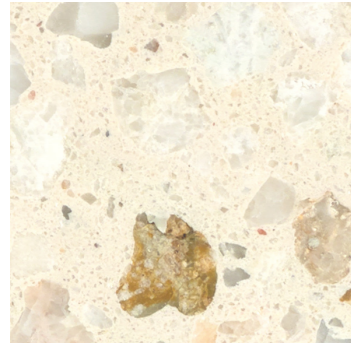


mono 435

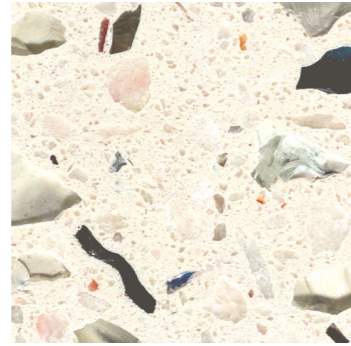


shadow 427

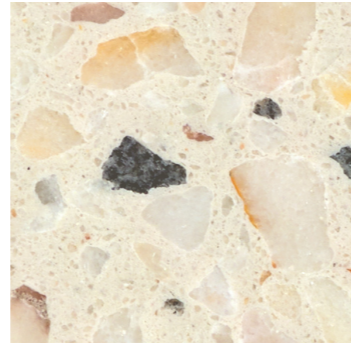
# MARMOCIM® REVOLUTION



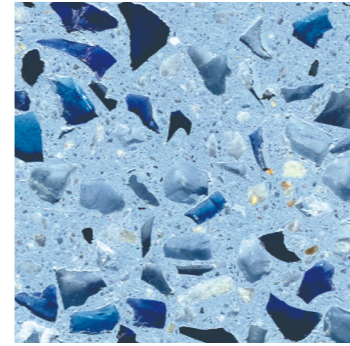
winter 459



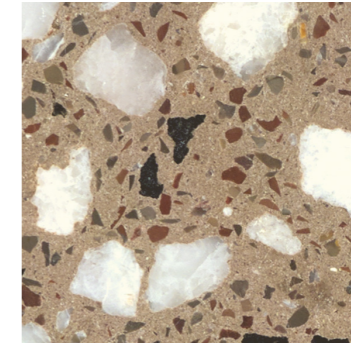
halo 475\* 



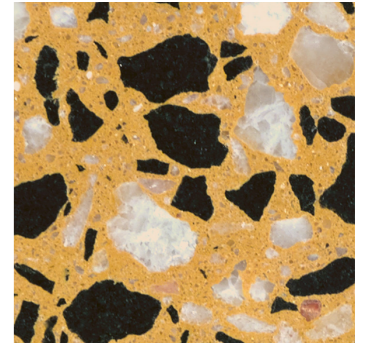
white 445



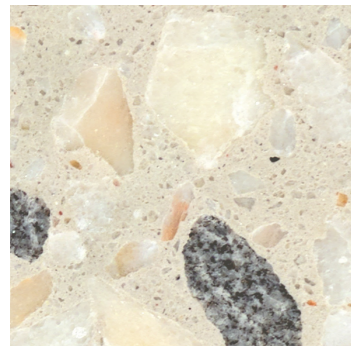
azure 480\* 



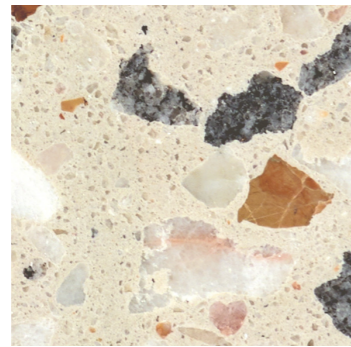
dune 442



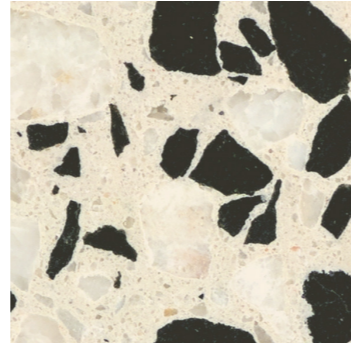
mars 453



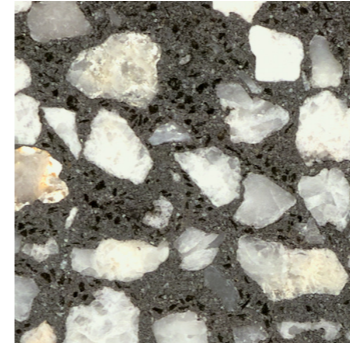
ivory 440



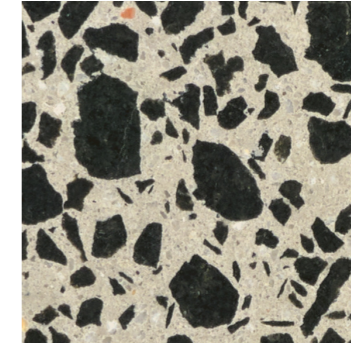
memory 441



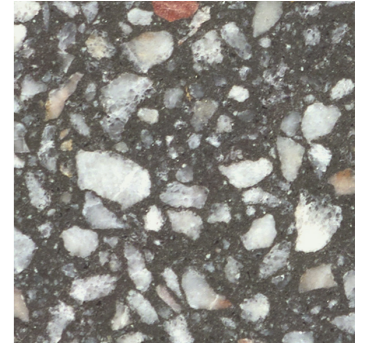
contrast 456



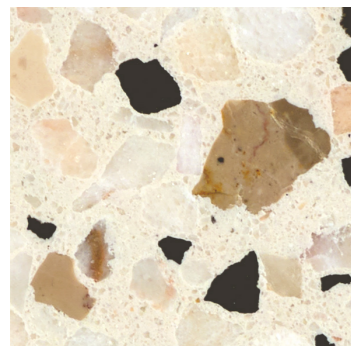
moon 447



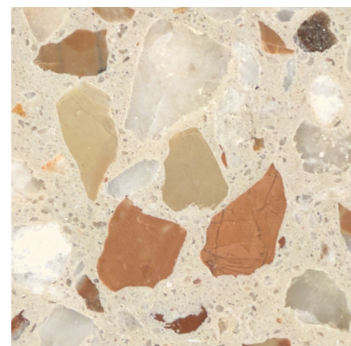
void 458



stardust 444



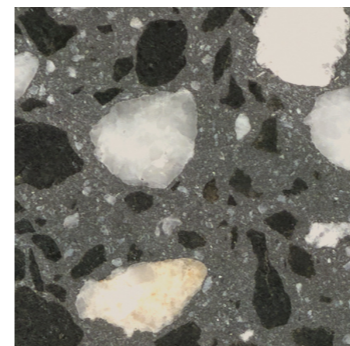
tale 448



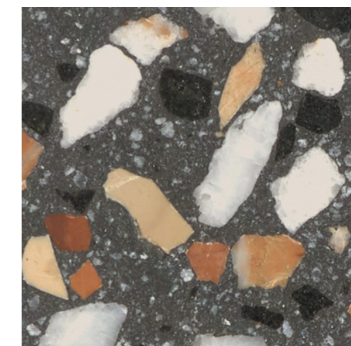
summer 450



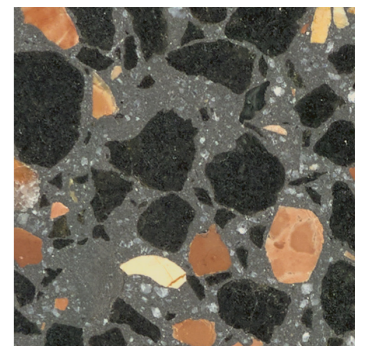
pepper 455



night 454



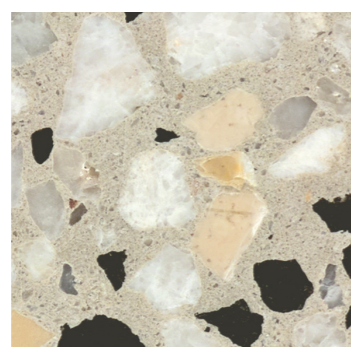
song 446



dusk 449



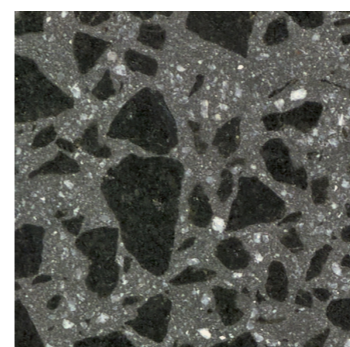
platinum 451



dawn 443



silver 457



graphite 452

\*Inclui produto reciclado (vidro)  
\*Includes recycled product (glass)

ARCHER



MARMOCIM® REVOLUTION SUMMER M 450 | DUSK M 449  
MARMOCIM® CLASSIC CREAM M 408  
CEMENTBRICK 885 CK30



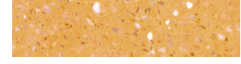
# MARMOBRICK CLASSIC



cream 408



spice 430



yellow 410



precious 432



rock 417



black 405



beige 425



snack 436



hill 429



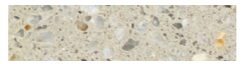
grass 422



earth 415



chic 433



grey 403



brick 428



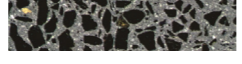
red 411



cave 423



mono 435



shadow 427



desert 434



lava 401



gem 424



salt 426



volcanic 413

# MARMOBRICK REVOLUTION



winter 459



contrast 456



dawn 443



moon 447



dusk 449



halo 475\*



tale 448



silver 457



void 458



graphite 452



white 445



summer 450



azure 480\*



stardust 444



ivory 440



pepper 455



dune 442



night 454



memory 441



platinum 451



mars 453



song 446

dimensões dimensions	caixa box	peças pieces	peso weight
100 x 410 x 18 mm	0,492 m <sup>2</sup>   18 Kg   12 un.	24,4 un. / m <sup>2</sup>	36,6 Kg / m <sup>2</sup>

\*Inclui produto reciclado (vidro) | Includes recycled product (glass)



MARMOBRICK CLASSIC GREY MB GR 403 | MB S 403



MARMOBRICK REVOLUTION SONG MBR S 446 | DUNE MBR S 442 | WINTER MBR S 459

CONCRESTRIP 940 CS28

# INCONCRETE



**950** LISO  
SMOOTH



**951** BOLHAS  
BUBBLES



**GR 950** BUJARDADO  
HAMMERED



/10



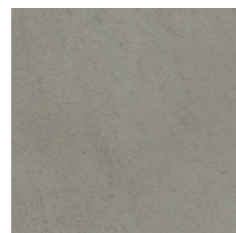
/00



/20



/30



/40

dimensões dimensions	peso weight	pallet pallet
500 x 500 x 25 mm	55 Kg / m <sup>2</sup>	20 m <sup>2</sup>   1106 Kg



VÉNUS 810 V43  
INCONCRETE 950/40

# BETÃO APARENTE

O RETRATO SIMPLES DO BETÃO!  
NAKED CONCRETE!



110 100 120 130 140



510 - TEXTURADO BRANCO 520 - TEXTURADO PRETO

dimensões dimensions	peso weight	pallet pallet
400 x 400 x 36 mm	80 Kg / m <sup>2</sup>	26,88 m <sup>2</sup>
600 x 400 x 42 mm	95 Kg / m <sup>2</sup>	22,08 m <sup>2</sup>



600 x 400 x 42

# BETÃO APARENTE BUJARDADO



GR 110 GR 100 GR 120 GR 130 GR 140



GR 160 GR 165

dimensões dimensions	peso weight	pallet pallet
400 x 400 x 36 mm	80 Kg / m <sup>2</sup>	26,88 m <sup>2</sup>
600 x 400 x 42 mm	95 Kg / m <sup>2</sup>	22,08 m <sup>2</sup>



D 100 - 600 x 400 x 40  
Degrau de betão normal  
Regular concrete step



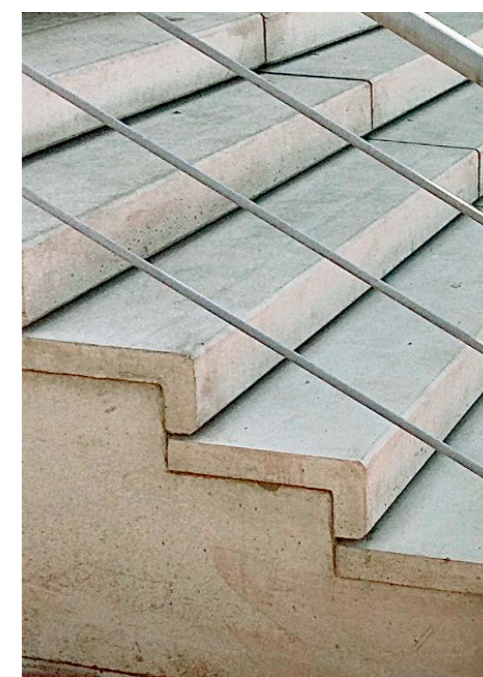
D 110 - 600 x 300 x 40  
Degrau de betão normal  
Regular concrete step



1500 x 350 x 100 x 45  
1350 x 350 x 100 x 45\*  
Degrau completo com espelho  
Full step with front edge  
60 Kg/un.

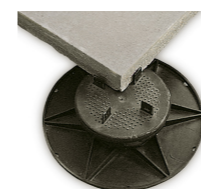


Isolamento Térmico 100 IT  
Thermal Insulation 100 IT

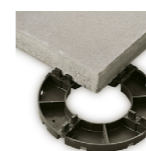


BETÃO APARENTE 520 TEXTURADO PRETO  
PAVIMENTO COM TRATAMENTO PRETO  
BLACK FLOOR TREATMENT

SUPORTES DE APOIO – FIXOS E AJUSTÁVEIS  
SUPPORTS – FIXED AND ADJUSTABLE



Apoios reguláveis 5 a 7 cm  
Apoios reguláveis 7 a 10 cm  
Apoios reguláveis 10 a 13 cm  
Adjustable supports 5 to 7 cm  
Adjustable supports 7 to 10 cm  
Adjustable supports 10 to 13 cm



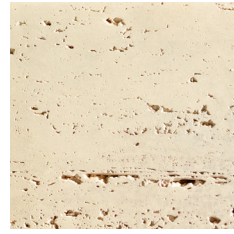
Apoios fixos  
Fixed supports



Apoios reguláveis  
Adjustable supports

# TRAVERTINO

**BETÃO OU PEDRA?**  
STONE OR CONCRETE?



960/00



960/10



960/30

dimensões dimensions	caixa de madeira wooden box	peça kg piece kg	peças pieces	peso weight
900 x 450 x 30 mm	12,15 m <sup>2</sup>   827 Kg   30 un.	27 Kg	2,47 un. / m <sup>2</sup>	66 Kg / m <sup>2</sup>

\* caixa de madeira - dimensões | wooden box - size 1100 x 1100 x 700 mm

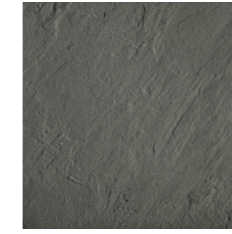


# ARDÓSIA

**BETÃO OU PEDRA?**  
STONE OR CONCRETE?



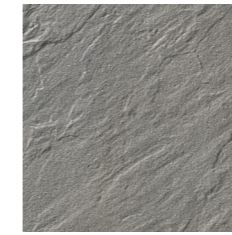
635/2



635/4



GR 635/2



GR 635/4

dimensões dimensions	peça kg piece kg	peso weight	paleta pallet
600 x 400 x 38 mm	19,5 Kg	81,12 Kg / m <sup>2</sup>	24 m <sup>2</sup>   1950 Kg
500 x 500 x 40 mm	20,8 Kg	83,2 Kg / m <sup>2</sup>	24 m <sup>2</sup>   1997 Kg
400 x 400 x 38 mm	12 Kg	75 Kg / m <sup>2</sup>	24 m <sup>2</sup>   1800 Kg





# GRANITO

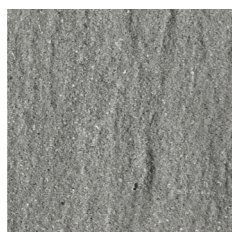
**BETÃO OU PEDRA?**  
STONE OR CONCRETE?



GR 620/2



GR 620/7



GR 620/4

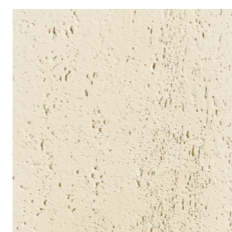
dimensões dimensions	peso weight	pallet pallet
600 x 400 x 42 mm	95 Kg / m <sup>2</sup>	22,08 m <sup>2</sup>

# STRUKTURIT

**BETÃO OU PEDRA?**  
STONE OR CONCRETE?



500/2



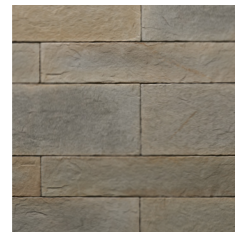
500/1

dimensões dimensions	peso weight	pallet pallet
600 x 400 x 42 mm	95 Kg / m <sup>2</sup>	22,08 m <sup>2</sup>

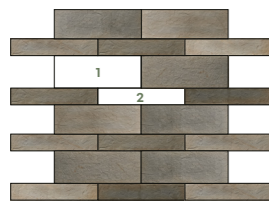


# ARDOS

**BETÃO OU PEDRA?**  
STONE OR CONCRETE?



AD 10\*



dimensões dimensions	
1	350 x 1000 x 40 mm
2	200 x 1000 x 40 mm

\* disponível noutras cores  
\* available in other colours



# ROMANO

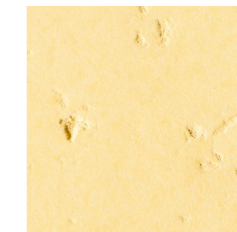
**CONTEMPORÂNEO OU MEDIEVAL!**  
CONTEMPORARY OR MEDIEVAL!



740/10



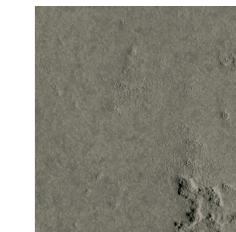
740/00



740/20



740/30

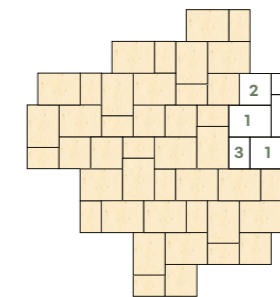


740/40

sugestão de aplicação  
application suggestion

**740** 1módulo | 1module  
1module | 1modul  
**1,28 m<sup>2</sup>**

3 peças | itens | pièces | stücke 600 x 450 **1**  
1 peça | item | pièce | stück 450 x 450 **2**  
2 peças | itens | pièces | stücke 450 x 300 **3**



peso weight	modulo/paleta module/pallet	paleta pallet
66 Kg / m <sup>2</sup>	12	15,36 m <sup>2</sup>   1050 Kg



# PORTUCALE



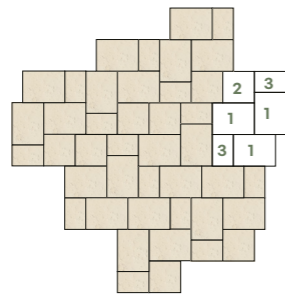
**CONTEMPORÂNEO OU MEDIEVAL!**  
**CONTEMPORARY OR MEDIEVAL!**



SUGESTÃO DE APLICAÇÃO  
 APPLICATION SUGGESTION

**750** 1módulo | 1module  
 1module | 1modul  
**1,28 m<sup>2</sup>**

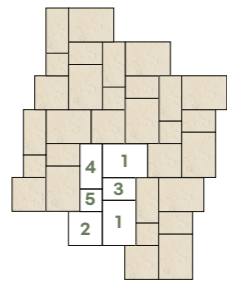
3 peças | items | pièces | stücke 600 x 450 **1**  
 1 peça | item | pièce | stück 450 x 450 **2**  
 2 peças | items | pièces | stücke 450 x 300 **3**



500 x 200 x 80 mm  
 lancil biarritz  
 biarritz kerb

**730** 1módulo | 1module  
 1module | 1modul  
**1,15 m<sup>2</sup>**

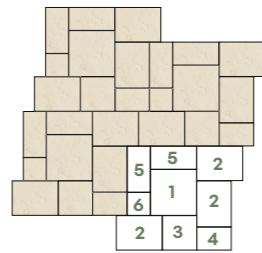
2 peças | items | pièces | stücke 600 x 450 **1**  
 1 peça | item | pièce | stück 450 x 450 **2**  
 1 peça | item | pièce | stück 450 x 300 **3**  
 1 peça | item | pièce | stück 600 x 300 **4**  
 1 peça | item | pièce | stück 300 x 300 **5**



450 x 100 x 15 mm  
 rodapé  
 skirting

**760** 1módulo | 1module  
 1module | 1modul  
**1,96 m<sup>2</sup>**

1 peça | item | pièce | stück 600 x 600 **1**  
 3 peças | items | pièces | stücke 600 x 450 **2**  
 1 peça | item | pièce | stück 450 x 450 **3**  
 1 peça | item | pièce | stück 450 x 300 **4**  
 2 peças | items | pièces | stücke 600 x 300 **5**  
 1 peça | item | pièce | stück 300 x 300 **6**



	peso weight	modulo/paleta module/pallet	paleta pallet
750	54 Kg / m <sup>2</sup>	14	17,92 m <sup>2</sup>   1000 Kg
730	56 Kg / m <sup>2</sup>	16	18,40 m <sup>2</sup>   1060 Kg
760	56 Kg / m <sup>2</sup>	10	19,60 m <sup>2</sup>   1130 Kg



PORTUCALE 760/10

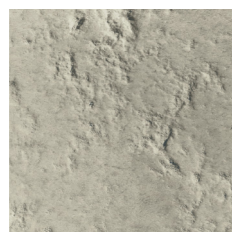
VÉNUS 810 V43

# TRIANON

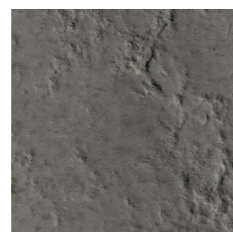
CONTEMPORÂNEO OU MEDIEVAL!  
CONTEMPORARY OR MEDIEVAL!



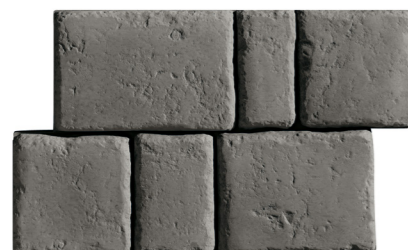
741/0



741/3



741/4



450 x 300 x 50 mm

peça kg piece kg	paleta pallet
15 Kg	11,88 m <sup>2</sup>   1320 Kg

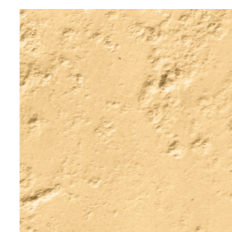


# PAVÊ RÚSTICO

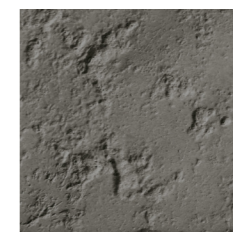
CONTEMPORÂNEO OU MEDIEVAL!  
CONTEMPORARY OR MEDIEVAL!



/1



/0



/4



81/4 - 190 x 95 x 40 mm



80/4 - 150 x 120 x 40 mm

	peça kg piece kg	paleta pallet
81	93 Kg	19,5 m <sup>2</sup>   1817 Kg
80	97 Kg	17 m <sup>2</sup>   1700 Kg



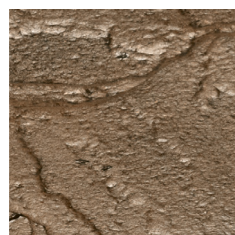


# PEDRA TOSCA

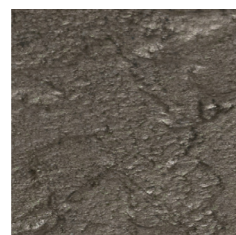
CONTEMPORÂNEO OU MEDIEVAL!  
CONTEMPORARY OR MEDIEVAL!



560/0



560/7



560/4



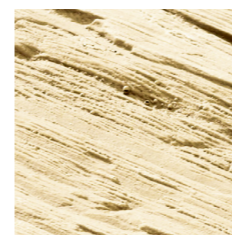
560/7 - 500 x 400 x 30 mm

	peça kg piece kg	paleta pallet
560	12 Kg	76 un.   912 Kg

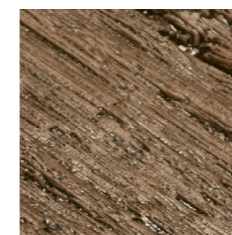


# MADEIRA TOSCA

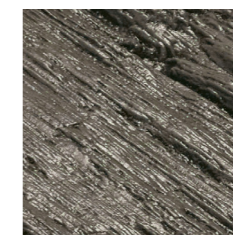
CONTEMPORÂNEO OU MEDIEVAL!  
CONTEMPORARY OR MEDIEVAL!



570/0



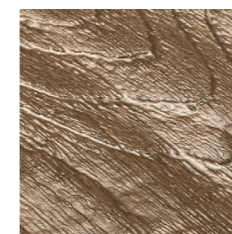
570/7



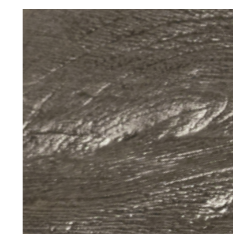
570/4



578/0



578/7



578/4



570/7 - 900 x 225 x 50 mm



578/7 - 500 x 250 x 30 mm

	peça kg piece kg	paleta pallet
570	20 Kg	48 un.   960 Kg
578	8,5 Kg	96 un.   816 Kg



# MADEIRA BETÃO

**ESTÉTICA DA MADEIRA E DURABILIDADE DO BETÃO!**  
WOOD AESTHETICS AND CONCRETE DURABILITY!



/2 PINHO



/4 ANTRACITE



/6 NATURAL



/7 CASTANHO



/8 CARVALHO



MADEIRA RISCADO 580/7 - DECK - 1000 x 200 x 30 mm



MADEIRA CLÁSSICO 579/7 - 1200 x 200 x 60 mm  
MADEIRA CLÁSSICO 579/7 - 1000 x 200 x 30 mm



577/7 - 3 formats - 900 x 225 x 30 mm



577/7 - 3 formats - 600 x 225 x 30 mm



577/7 - 3 formats - 225 x 225 x 30 mm



500 x 100 x 15 mm  
rodapé  
skirting



74/7 - 500 x 500 x 30/45 mm



587/7 - 600 x 300 x 30 mm

	dimensões dimensions	peso weight	paleta PT pallet PT	paleta exportação export pallet
579 . 580	1000 x 200 x 30 mm	69 Kg / m <sup>2</sup>	11,60 m <sup>2</sup>	17,40 m <sup>2</sup>
579	1200 x 200 x 60 mm	138 Kg / m <sup>2</sup>	7,20 m <sup>2</sup>	-

rodapé | skirting caixa | box – 38,5 Kg | 24 un.

	dimensões dimensions	peso weight	paleta pallet
74	500 x 500 x 30mm 500 x 500 x 45 mm	65 Kg / m <sup>2</sup> 100 Kg / m <sup>2</sup>	18 m <sup>2</sup> 13 m <sup>2</sup>
587	600 x 300 x 30 mm	64 Kg / m <sup>2</sup>	20,16 m <sup>2</sup>

	dimensões dimensions	modulo/paleta module/pallet	caixa box	paleta pallet
577 3 formats	900 x 225 x 30 mm 600 x 225 x 30 mm 600 x 225 x 30 mm	0,39 m <sup>2</sup>	66 Kg / m <sup>2</sup>	16,38 m <sup>2</sup>   1092 Kg



ROYAL 830 RY12  
MADEIRA 579/8

# GODO E PEDRA LAVADA



**NÚMERO 1 EM VENDAS**  
**NUMBER 1 IN SALES**

DURABILIDADE · RESISTÊNCIA · ANTI-DERRAPANTE · VERSÁTIL  
DURABILITY · RESISTANCE · ANTI-SKID · VERSATILE



251



260



270



275



280



290



293



295



296



315



320



325

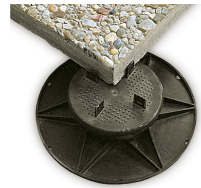


330



350

SUPORTES DE APOIO – FIXOS E AJUSTÁVEIS  
SUPPORTS – FIXED AND ADJUSTABLE



Apoios fixos  
Fixed supports

Apoios reguláveis 5 a 7 cm  
Apoios reguláveis 7 a 10 cm  
Apoios reguláveis 10 a 13 cm  
Adjustable supports 5 to 7 cm  
Adjustable supports 7 to 10 cm  
Adjustable supports 10 to 13 cm



Apoios reguláveis  
Adjustable supports



**D 275 - 600 x 400 x 40\***  
Degrau de pavimento lavado  
Washed slab step



**1500 x 350 x 100 x 45\***  
**1350 x 350 x 100 x 45\***  
Degrau completo com espelho  
Full step with front edge  
60 Kg/un.



**Isolamento Térmico 251 IT\***  
Thermal Insulation 251 IT\*

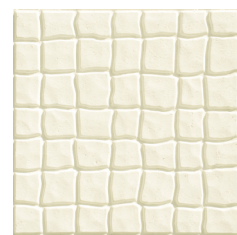
dimensões dimensions	peso weight	palete pallet
<b>A</b> 400 x 400 x 36 mm	80 Kg / m <sup>2</sup>	25,92 m <sup>2</sup>
<b>B</b> 600 x 400 x 42 mm	95 Kg / m <sup>2</sup>	22,08 m <sup>2</sup>

\*disponível em todos os modelos | available for all models



# RELEVO NORMAL

CLÁSSICO, CONTEMPORÂNEO E DESCOMPROMETIDO  
CONTEMPORARY, CLASSIC AND UNCOMPROMISED



71/0



62/0



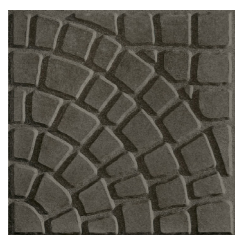
63/0



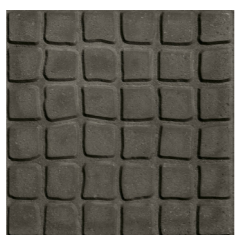
GR 70/0



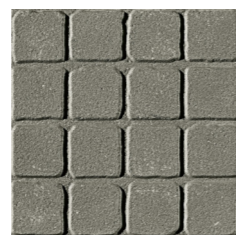
70/0



62/5



63/5



GR 70/5



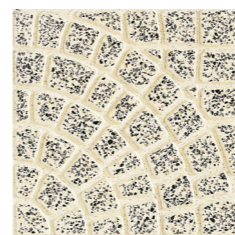
GR 72/2

dimensões dimensions	peso weight	paleta pallet
400 x 400 x 38 mm	81,25 Kg / m <sup>2</sup>	24,96 m <sup>2</sup>   2028 Kg
GR	75 Kg / m <sup>2</sup>	24,96 m <sup>2</sup>   1870 kg

# RELEVO POLIDO



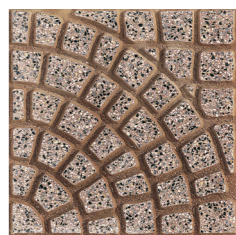
62/0



62/3



62/6



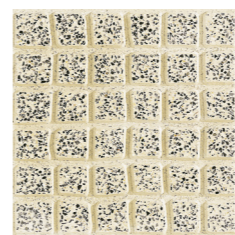
62/7



62/4



63/0



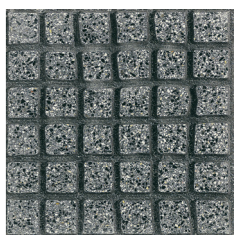
63/3



63/6



63/7



63/4



64/0



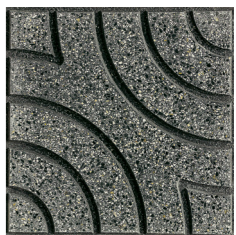
64/3



64/6



64/7



64/4



70/0



70/3



70/6



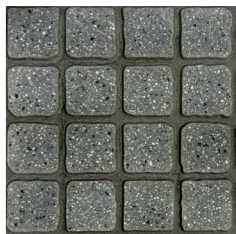
70/7



70/4



69/7

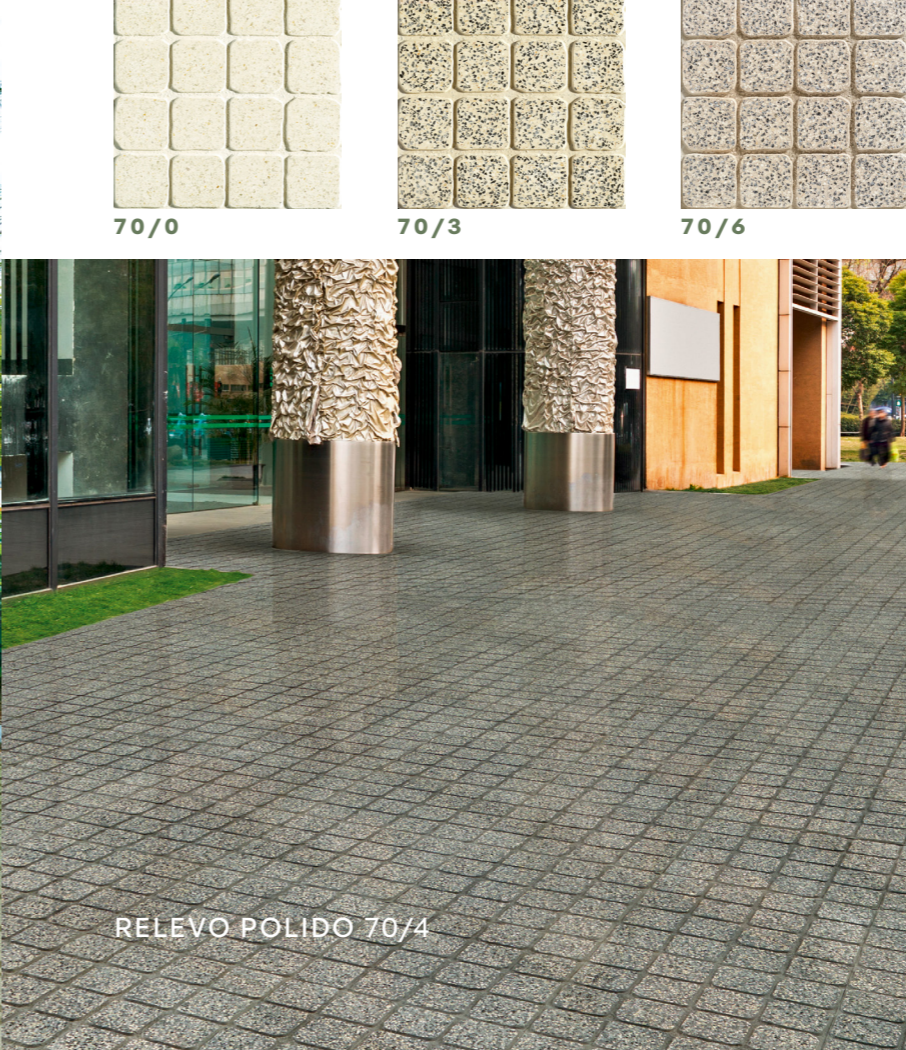


70/4\*

dimensões dimensions	peso weight	paleta pallet
400 x 400 x 38 mm	81,25 Kg / m <sup>2</sup>	24,96 m <sup>2</sup>   2028 Kg
*500 x 500 x 40 mm 70/4	±83 Kg / m <sup>2</sup>	24 m <sup>2</sup>   ±1997 Kg



RELEVO GR 70/0



RELEVO POLIDO 70/4

# LISO POLIDO

TRADIÇÃO  
TRADITION



140/1



140/3



140/44

dimensões dimensions	peso weight	paleta pallet
400 x 400 x 31 mm	75 Kg / m <sup>2</sup>	28,8 m <sup>2</sup>



# PAVIMENTOS INCLUSIVOS



PAVIMENTOS TÁTEIS  
TACTILE WALKING SURFACE INDICATORS

## PAVIMENTO DIRECIONAL | DIRECTIONAL TACTILE



133/2  
400 x 400 x 35 mm



134/0  
400 x 400 x 35 mm



141/6  
400 x 400 x 60 mm



142/4  
400 x 400 x 60 mm

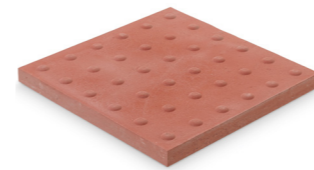


143/2  
200 x 200 x 80 mm



144/2  
100 x 100 x 80 mm

## PAVIMENTO PITONADO | TACTILE BLISTER PAVING



136/7  
400 x 400 x 35 mm



137/7  
400 x 400 x 60 mm



138/7  
200 x 200 x 80 mm



139/7  
100 x 100 x 80 mm



	peça piece	peça m <sup>2</sup> pieces per m <sup>2</sup>	paleta pallet
133   134   136	0,16 m <sup>2</sup>   13kg	6,25 un.	24,96 m <sup>2</sup>   2028 Kg   156 un.
141   142   137	0,16 m <sup>2</sup>   20,8 Kg	6,25 un.	9,60 m <sup>2</sup>   1248 Kg   60 un.
143   138	0,04 m <sup>2</sup>   7 Kg	25 un.	9,60 m <sup>2</sup>   1700 Kg   240 un.
144   139	0,01 m <sup>2</sup>   1,76 Kg	100 un.	5,40 m <sup>2</sup>   970 Kg   540 un.

# IMPERMEABILIZANTE

WATERPROOFING



Após o assentamento dos pavimentos, recomendamos a aplicação de um produto da nossa gama Block.

After the installation of the floors, we recommend applying a product from our Block range.

**Block Protect - Marmo**  
Marmocim

**Block Protect - CLQ 100**  
sem Brilho / Matte - Lajetas / Slab

**Block Protect - CLQ 105 (Incolor / Colorless)**  
com Brilho / Glossy - Lajetas / Slab

**Block Protect - CLQ 104 (Preto / Black)**  
Ardósia

**Block Protect - CLQ 101 (Incolor / Colorless)**  
Madeiras /2 - /4 - /8

**Block Protect - CLQ 109 (Castanho / Brown)**  
Madeiras /7

## INDICAÇÕES GERAIS

GENERAL INFORMATION

Este catálogo, pretende mostrar a vasta gama de produtos, não é exaustivo de todas as possibilidades que lhe poderemos oferecer, pelo que não dispensa a consulta do departamento comercial d'A Cimenteira do Louro para qualquer esclarecimento.

This catalogue provides an overview of our wide range of our products. It is not a definitive compilation as other options are available. For further information or explanations please contact the sales department of A Cimenteira do Louro.

### CORES

Podem ocorrer pequenas variações na granulometria e tons de cor dos produtos devido às características dos materiais e à reprodução fotográfica em catálogos e outros materiais impressos ou eletrónicos.

### COLOURS

Slight variations in the granulometry and colour tones of the products may occur due to the characteristics of the materials and the photographic reproduction in catalogues and other printed or electronic material.

### COMPOSIÇÃO

O desenvolvimento dos revestimentos da Cimenteira do Louro é baseado numa análise cuidadosa da pedra natural e um processo tecnológico aperfeiçoado ao longo dos anos. A mistura é vertida em moldes especiais concebidos especificamente para criar um efeito o mais realista possível, utilizando um número de diferentes moldes para criar uma variedade de formas e evitar assim repetições. Efeitos cromáticos são obtidos através da aplicação de pigmentos de óxido de ferro de qualidade superior para cada pedra, dandolhes um efeito natural, não apenas na forma, mas também nas cores.

### COMPOSITION

The development of A Cimenteira do Louro's tiles and pavers is based on the careful analysis of the natural stone and in the technological process, optimised over the years. The mixture is poured into special moulds specifically designed to create an effect as realistic as possible, and using several different moulds to create a variety of shapes and avoid replications. The chromatic effects are achieved by applying high-quality iron oxide pigments into each tile, giving them a natural effect, not only in shape but also in colour.

### VARIAÇÕES DE TONALIDADES

Estes produtos são fabricados a partir de granulados de pedra natural que podem apresentar ligeiras variações de tonalidade em função do tipo de fabrico e do seu aprovisionamento. O exame de textura e da cor devem ser sempre nos produtos em seco e com o decorrer do tempo as cores podem sofrer algumas alterações naturais tecnicamente inevitáveis. No final da aplicação do revestimento aconselhamos sempre a utilização de um repelente da nossa gama de produtos de tratamento de superfície de modo a garantir a durabilidade do material.

### VARIATION OF SHADES

These products are manufactured from natural stone granulates that may present slight variations in colour shade, depending on the type of manufacture and supply. The texture and colour tests require the products to be dry. Over time, the products may display some technically-inevitable natural changes in colour. At the end of the tile installation process, it is advisable for some of the products to apply a surface treatment from our range, in order to ensure the durability of the material.

### EFLORESCÊNCIAS

O aparecimento de manchas ou auréolas brancas na superfície do betão é um fenómeno natural e tecnicamente inevitável que podemos encontrar em certas condições de secagem, sobretudo em produtos à base de cimento. Estas eflorescências não alteram em nada a qualidade intrínseca das peças e tendem a desaparecer com o tempo depois de estarem expostas às intempéries naturais. O aparecimento de eflorescências, sendo do conhecimento do cliente, não pode ser, em qualquer caso, causa de reclamação.

### EFFLORESCENCE

The possible appearance of white stains on the concrete surface is a natural and technically unavoidable phenomenon called efflorescence, which we can find in certain drying conditions, especially in cement-based products. These do not alter the intrinsic quality of the pieces and tend to disappear over time after being exposed to natural weathering. The appearance of efflorescence, being known to the client, cannot, in any case, be a cause for complaint.

### MANUTENÇÃO

Aconselhamos que, pelo menos de dois em dois anos, um tratamento de manutenção superficial com a nossa gama Block protect.

### MAINTENANCE

We recommend that, at least every two years, a surface maintenance treatment with our Block protect.



[www.aclweb.pt](http://www.aclweb.pt)

**ACL** ACIMENTEIRADO LOURO



**SEDE // UNIDADE DE PRODUÇÃO DE LOURO**  
HEADQUARTERS // PRODUCTION CENTER LOURO

GPS N41 26 33 | W8 32 40

**T.** +351 252 301 900 <sup>(1)</sup>  
**F.** +351 252 301 929 <sup>(1)</sup>

**UNIDADE DE PRODUÇÃO DE LOUSADO**  
PRODUCTION CENTER LOUSADO

GPS N41 22 18 | W8 32 08

**T.** +351 252 301 000 <sup>(1)</sup>  
**F.** +351 252 301 009 <sup>(1)</sup>

Rua Padre Domingos J. Pereira, 1284 - Louro  
AP. 163 - E. C. Famalição  
4761-926 V. N. Famalição  
Portugal

[acl@aclweb.pt](mailto:acl@aclweb.pt)  
[www.aclweb.pt](http://www.aclweb.pt)



<sup>(1)</sup> Chamada para a rede fixa nacional  
Call to the Portuguese landline network



[www.viriato.com.pt](http://www.viriato.com.pt)  
06/2023

